

THELCO CUTAWAY DRAWING OF WORTHINGTON® PUMP MODEL D-1011 FRAME 3, COOLING JACKET, 6 inch ONLY
 MECHANICAL SEAL TYPE, SIZES; 3 X 2 X 6, 4 X 3 X 6, 6 X 4 X 6

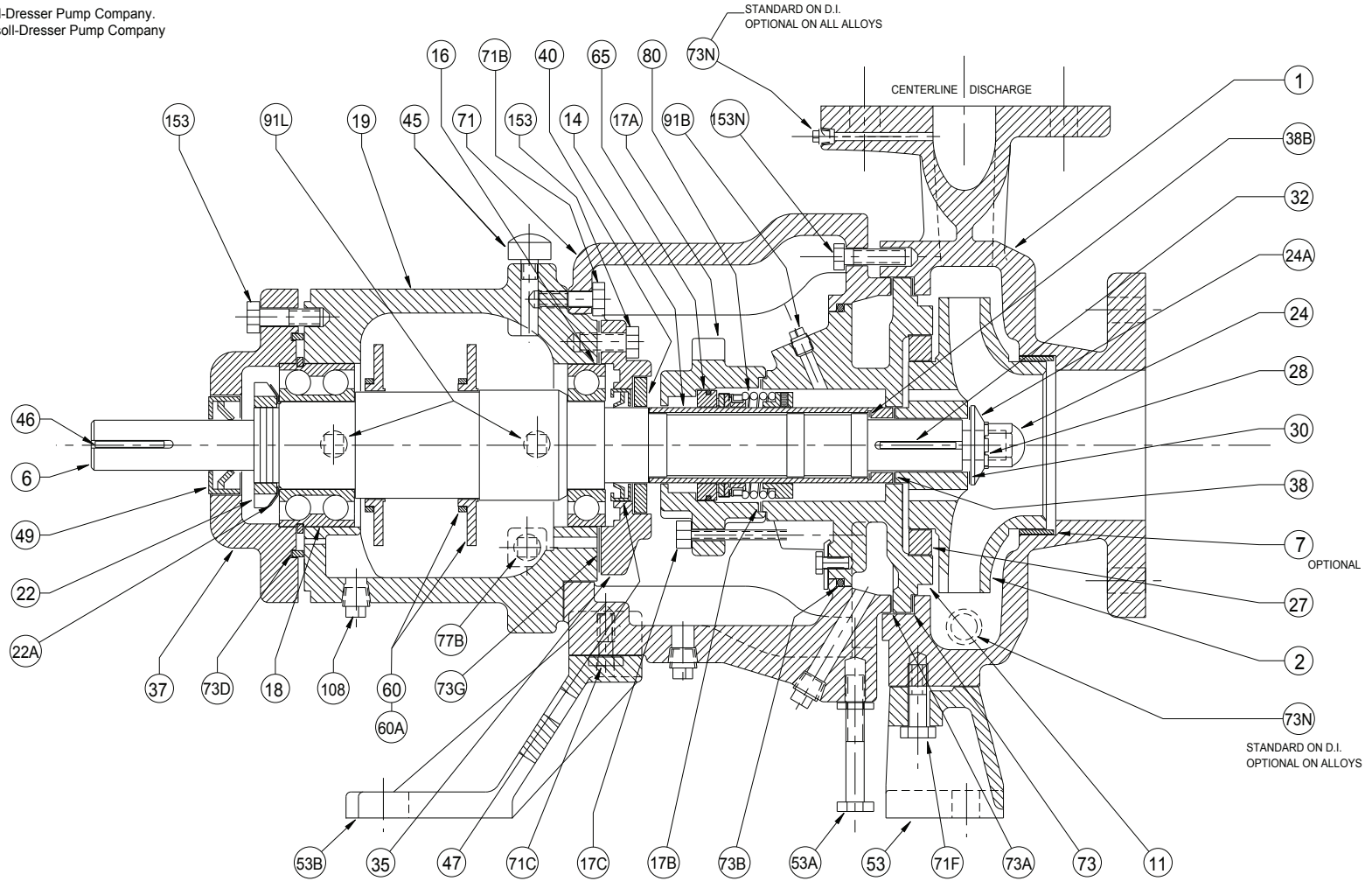
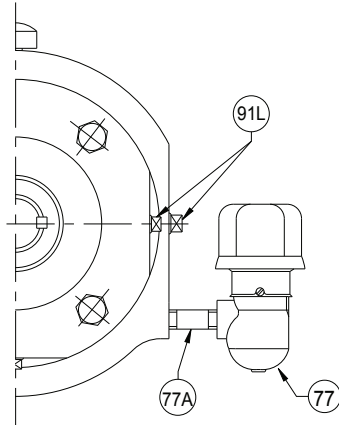
Thelco Corporation Englewood, CO. USA

www.thelco.com

WORTHINGTON® is a registered trademark of Ingersoll-Dresser Pump Company.
 Thelco is not affiliated with WORTHINGTON® or Ingersoll-Dresser Pump Company



© Any reproduction must include this copyright notice.



Note: Cut Shaft with Sleeve Version Shown.
 Solid Shaft Version is Dimensionally Similar to Cut Shaft Including Sleeve.
 *** These Two Parts are not Included with the Solid Shaft Version.

* Items contained in liquid end gasket kit.
 ** Items contained in frame end gasket kit

REFERENCE NUMBERS

1	CASING	24	NUT, IMPELLER	49	LIP SEAL, THRUST BEARING **	73D	SEAL RING, THRUST BRG COVER **
2	IMPELLER	24A	LOCK WASHER, IMPELLER *	53	FOOT, CASING	73G	GASKET, LINE BEARING COVER **
6	SHAFT (Shown Cut for a Sleeve)	27	RING, ADAPTER COVER	53A	ADAPTER SUPPORT, INBOARD	73N	PIPE PLUG, CASING
7	RING, CASING (OPTIONAL)	28	GASKET, IMPELLER NUT *	53B	ADAPTER SUPPORT	77	CONSTANT LEVEL OILER
11	STUFF BOX COVER	30	GSKT, IMPELLER LOCK WSHR *	60	FLINGER, OIL	77A	NIPPLE, OILER
14	SLEEVE, SHAFT ***	32	KEY, IMPELLER	60A	COLLAR, OIL FLINGER	77B	PIPE PLUG, GREASE LUBE PUMPS
16	LINE BEARING	35	COVER, LINE BEARING	65	SEAT, MECHANICAL SEAL	80	ROTOR, MECHANICAL SEAL
17A	GLAND, MECHANICAL SEAL	37	COVER, THRUST BEARING	71	ADAPTER	91B	PIPE PLUG, STUFF BOX
17B	GASKET, MECH SEAL GLAND	38	GASKET, SLEEVE (OUTER) *	71B	CAP SCREW, ADAPTER	91L	PIPE PLUG, OIL LUBE PUMPS
17C	CAP SCREW, MECH-SEAL GLAND	38B	GASKET, SLEEVE (INNER) * ***	71C	CAP SCREW, ADAPTER FOOT	91L	GREASE FTNG, GREASE LUBE PUMPS
18	THRUST BEARING	40	DEFLECTOR	71F	CAP SCREW, CASING FOOT	108	PIPE PLUG, DRAIN
19	BEARING HOUSING	45	VENT CAP	73	GASKET, CASING *	153	CAP SCREW, BEARING COVER
22	LOCK NUT, BEARING	46	KEY, COUPLER	73A	GASKET, STUFF BOX COVER *	153N	CAP SCREW, CASING
22A	WASHER, BRG LOCK NUT **	47	LIP SEAL, LINE BEARING **	73B	O-RING, STUFF BOX COVER *		

Oct 2008